



MONTHLY MEMBERSHIP PROGRESS REPORT

District 324B3

Results as of: 08/31/2017

GMT: N S SANKAR

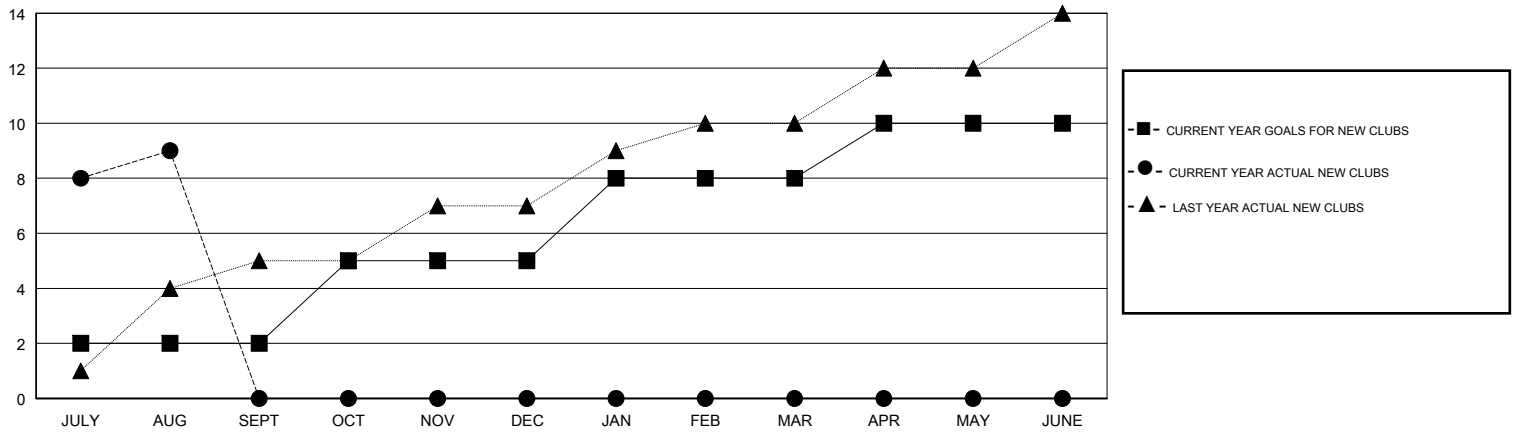
LOCATION INDIA

GMT CA

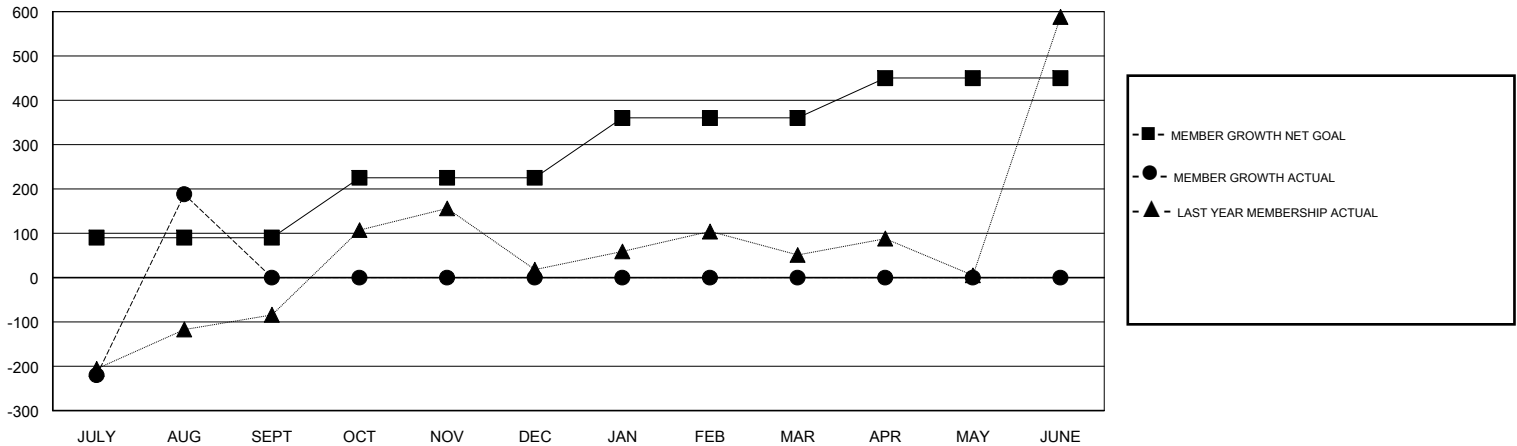
Clubs			
RESULTS FOR 2017-2018			
QUARTER	NEW CLUB GOAL	NEW CLUBS	DROPPED CLUBS
JULY/AUG/SEPT	2	9	0
OCT/NOV/DEC	3	0	0
JAN/FEB/MAR	3	0	0
APR/MAY/JUNE	2	0	0

Members			
RESULTS FOR 2017-2018			
QUARTER	MEMBER GROWTH NET GOAL	MEMBER GROWTH ACTUAL	DROPPED MEMBERS ACTUAL (including transfers)
JULY/AUG/SEPT	90	735	547
OCT/NOV/DEC	135	0	0
JAN/FEB/MAR	135	0	0
APR/MAY/JUNE	90	0	0

GOALS AND ACTUAL NEW CLUBS CUMULATIVE



GOALS AND ACTUAL MEMBERS CUMULATIVE



DROPPED CLUBS: 0	78 CLUBS OF 168 ADDED 1 OR MORE NEW MEMBERS	<u>GENDER DISTRIBUTION</u>	
DROPPED MEMBERS		MALE	5,509 (77.14%)
DECEASED	13	FEMALE	1,633 (22.86%)
CLUB CANCELLED	0	Women Percentage Fiscal Year Goal: 10%	
OTHER	534	CLICK HERE FOR CUMULATIVE MEMBERSHIP DATA	
TOTAL	547	TOTAL FAMILY UNIT MEMBERS	3,213
		FAMILY MEMBERS PAYING HALF DUES	1,844